

March 2, 2018

Agenda:

1. Bell Work
2. What we already know about plants
3. Plant Structure Notes

What part of a plant makes energy?

What does a plant take in to perform photosynthesis?



March 5, 2018

Agenda:

1. Bell Work
2. Good Things
3. Adhesion & Cohesion
4. Transpiration notes
5. Plants are cool `too.
Maybe

The flower is part of what system in a plant?

Reproductive System

What would the shoots/stems system be comparable to in your body?

Skeleton /circulatory



Properties Of Water

- Adhesion

Water Attracting to other things.



- Cohesion

Water Attracting to other water molecules



March 5, 2018

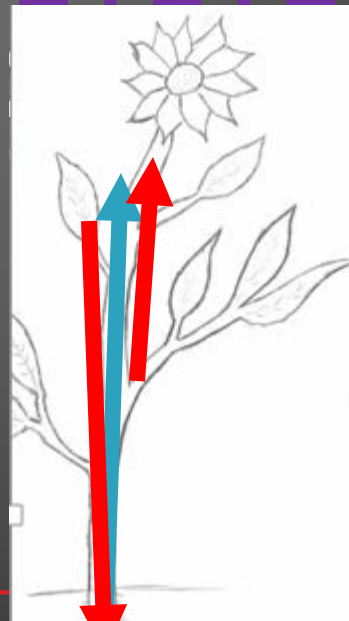
Agenda:

1. Bell Work.
2. Adaptation Discussions
3. Adaptation Notes
4. Plants are Cool Too (ep. 3)

What's the difference between xylem and phloem?

Xylem: Carries water and minerals from roots upward

Phloem: Carries Sugars(carbs) from leaves all over the plant.



Quiz Friday

March 7, 2018

Agenda:

1. Bell Work
2. Types of Plants
3. Tropism Notes
4. Plants are cool too 4



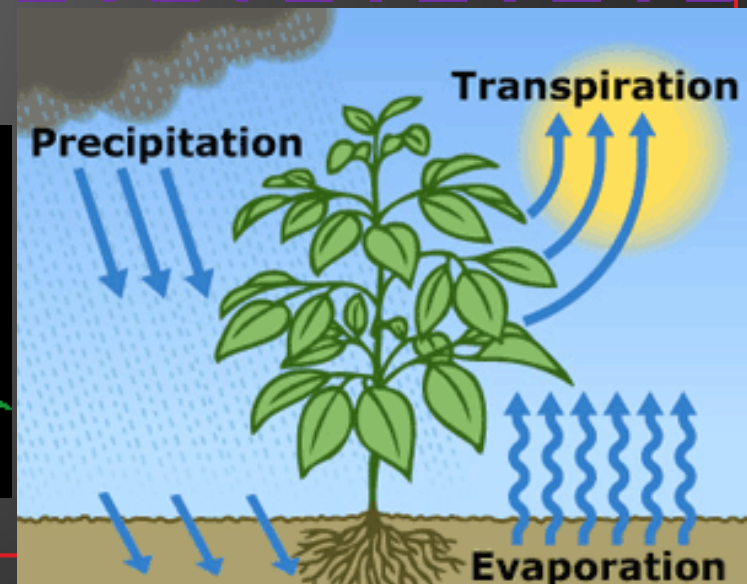
What is the property of water where it sticks to water?

Cohesion



What is it called when water evaporates out of plants?

Transpiration

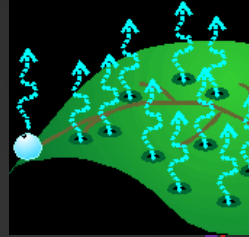


March 8, 2018

Agenda:

1. Bell Work
2. Photo Journal Project
3. Energy Flow
4. Energy Flow Quizlet

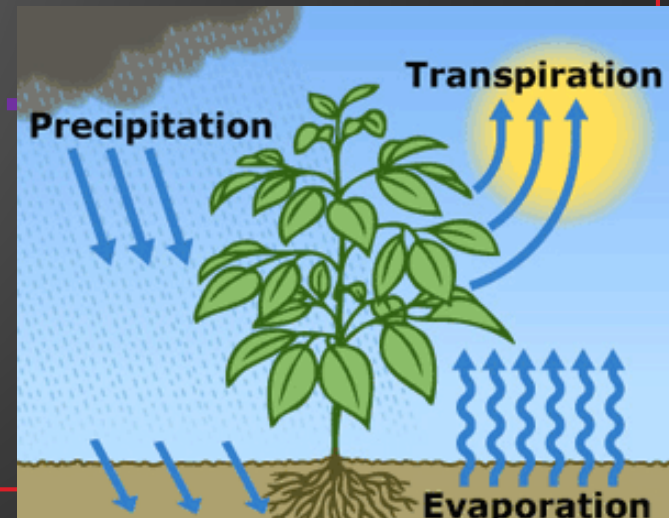
What properties of water make it able to climb the xylem of plants?



Adhesion & Cohesion

Where are Carbohydrates produced and what transports them?

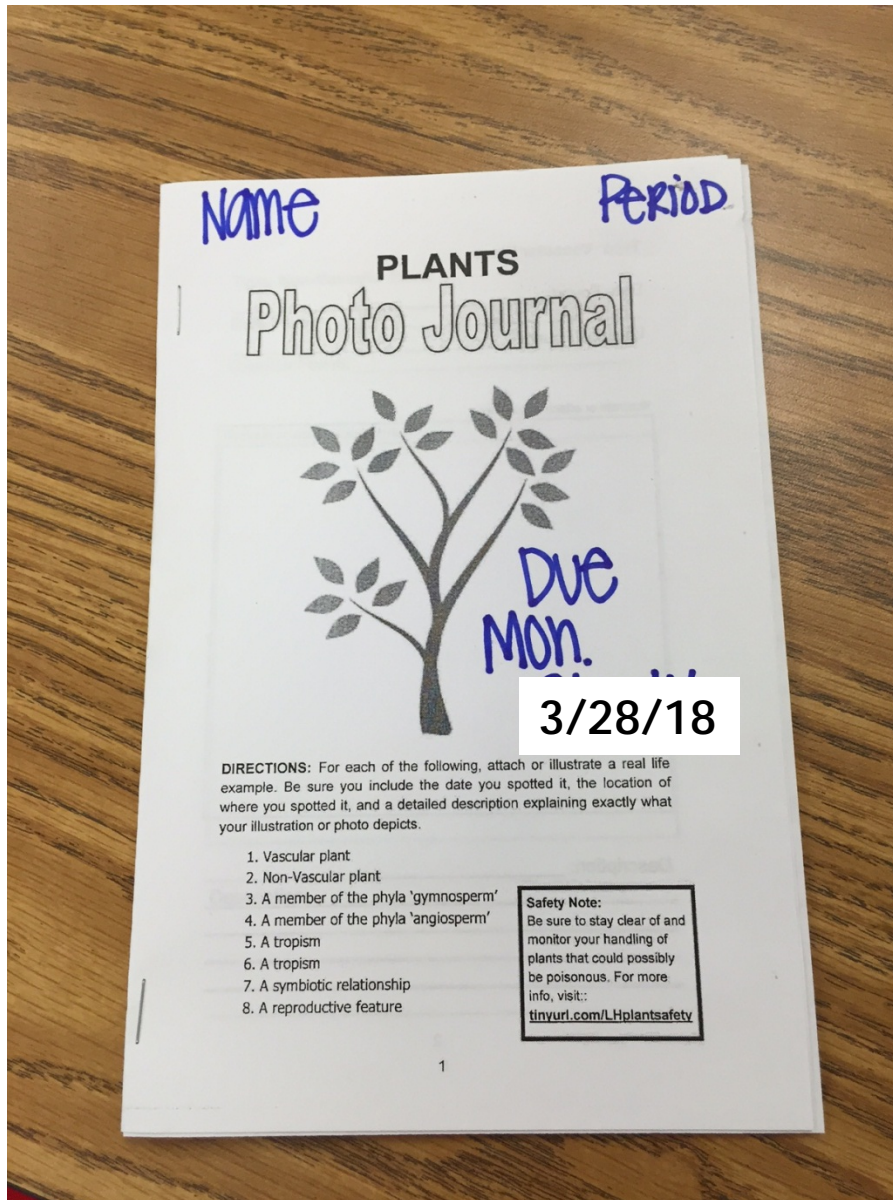
Phloem



Plant Photo Journal

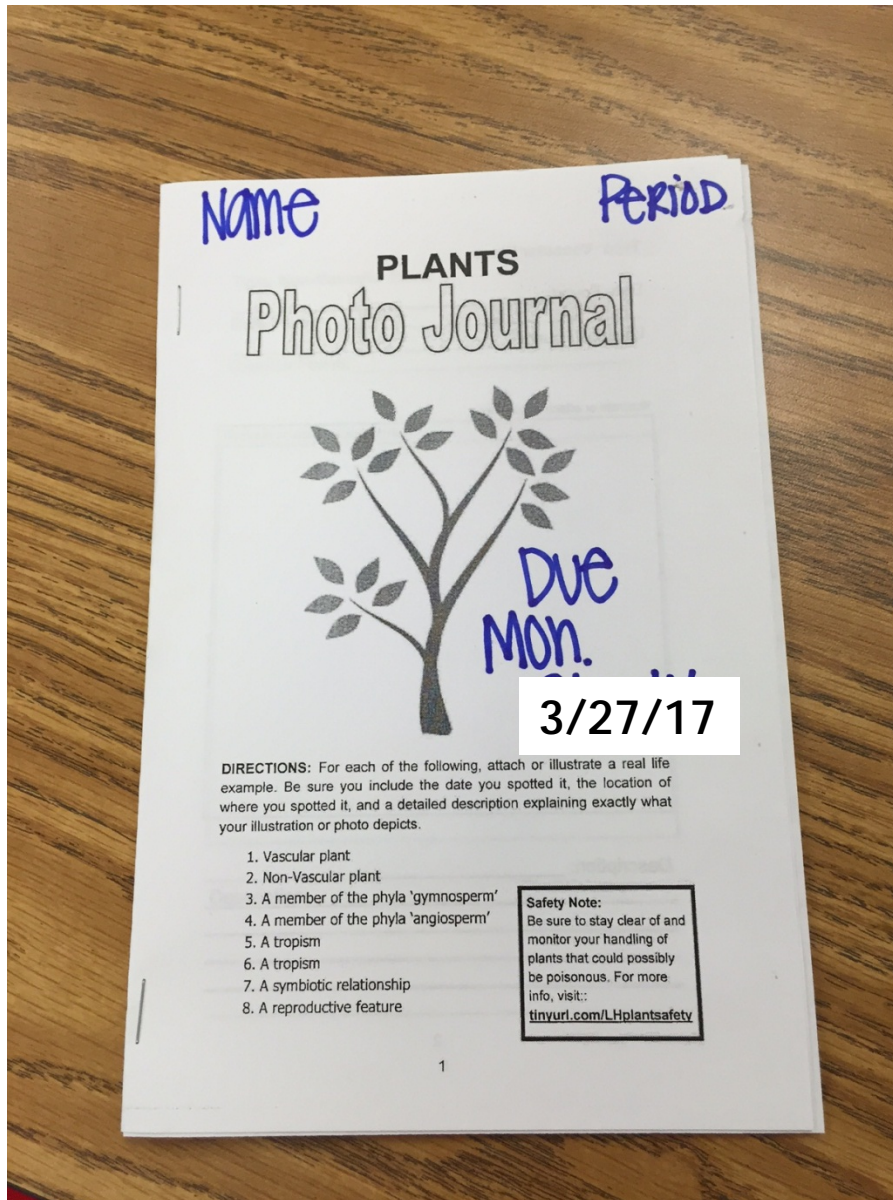
**First & Last
Name at top**

**Write
"Due Mon.
3/28/18"**



**8 plant
phenomenon to
find**

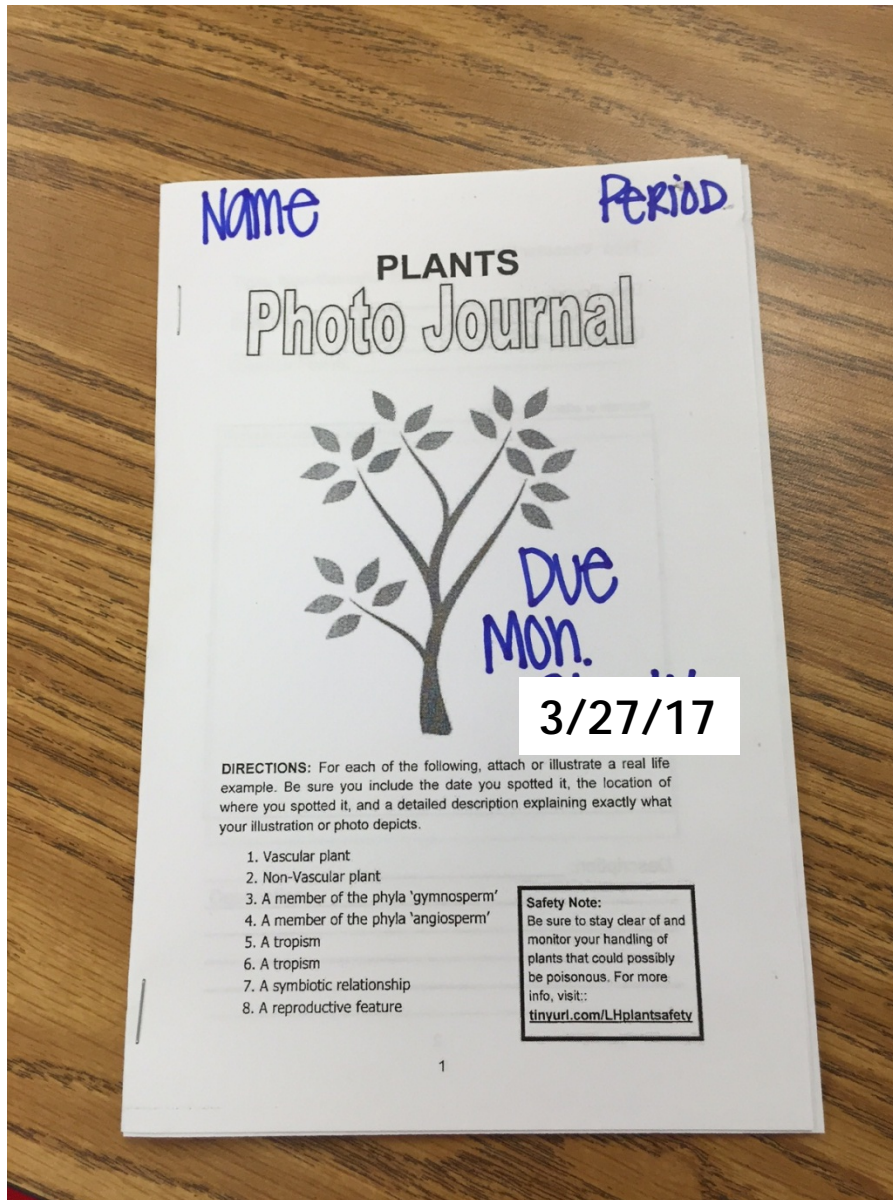
**These can all be
found in your
neighborhood/
around the
school**



Plant Photo Journal

For each phenomena you will need:

- A picture
 - Hand-drawn OR photo
 - Picture must be color
 - I will not print for you
- Date Found
- Location Found
- A description of WHY this picture is an example

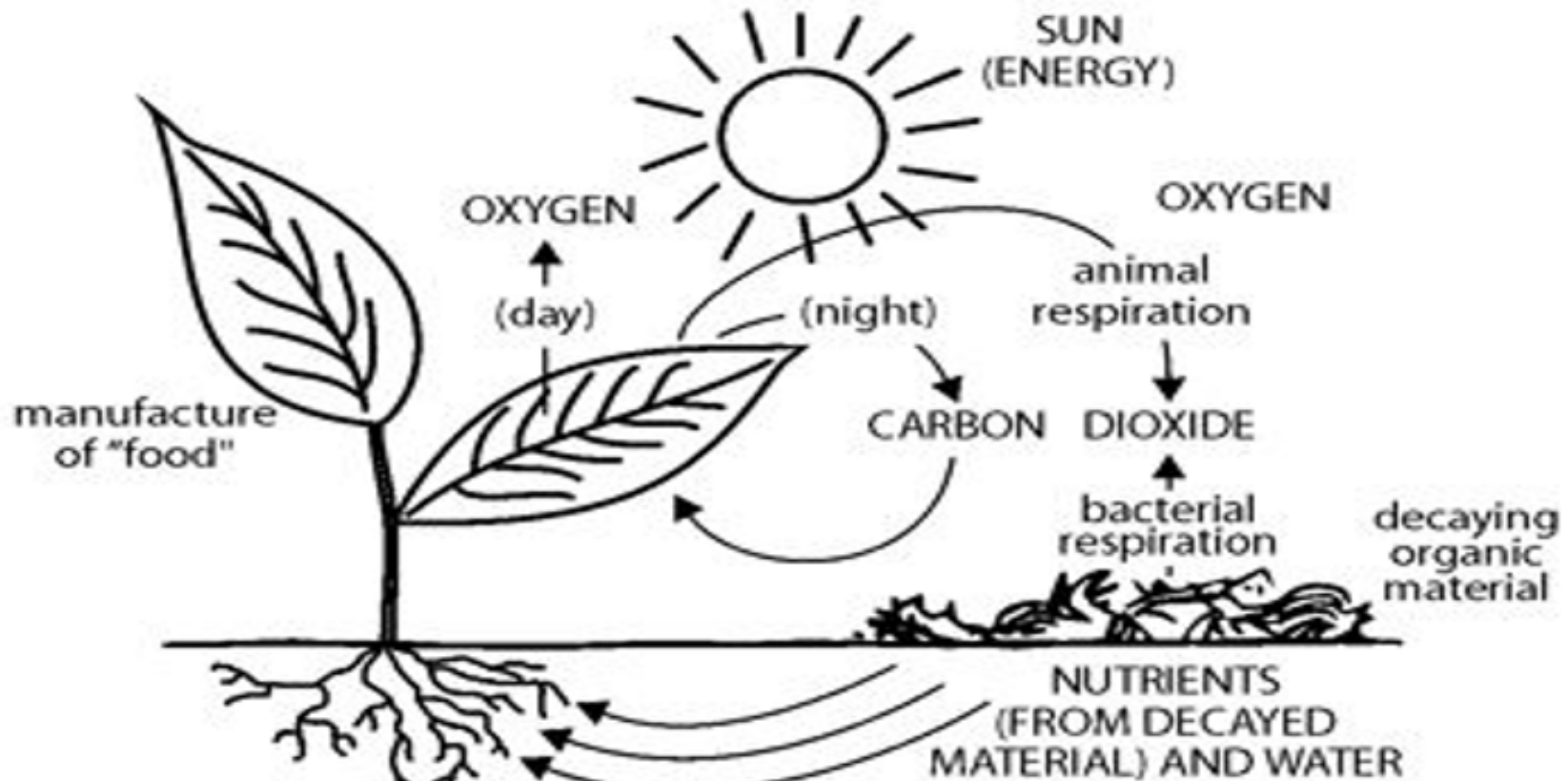


What do you already know about plants

Word Bank

- Bacteria
- Carbon
- Pioneer
- Eukaryote
- Respiration
- Autotrophic
- Photosynthesis
- Cellulose
- Carbohydrate
- Photosynthesis
- Chloroplasts
- Producers

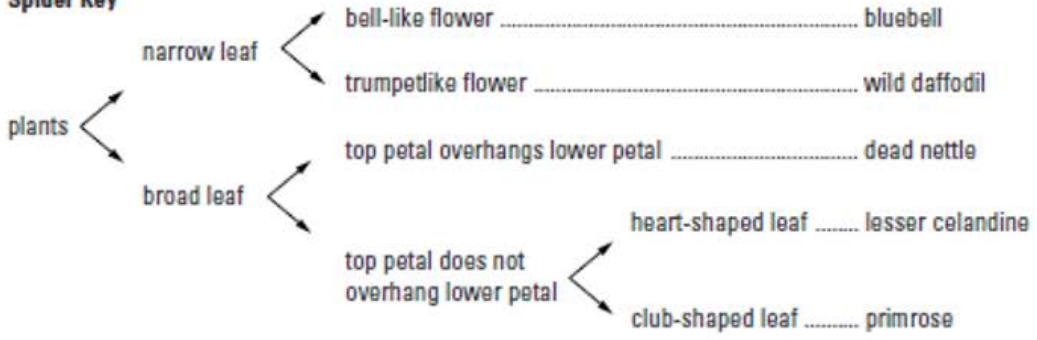
What do we already know about plants?



7. Plants are in the kingdom *Plantae*, and in the domain Eukaryote because the cells have membrane bound organelles. [Unit 3]
8. Plants store energy as this biomolecule Carbohydrates (Hint: Think potato!). [Unit 6]



Spider Key



- | | |
|--|--|
| 1. narrow leaf go to 2 | 3. top petal overhangs lower petal dead nettle |
| broad leaf go to 3 | top petal does not overhang |
| 2. bell-like flower bluebell | lower petal go to 4 |
| trumpetlike flower wild daffodil | 4. heart-shaped leaf lesser celandine |
| | club-shaped leaf primrose |

- A. _____
- B. _____
- C. _____
- D. _____
- E. _____



March 19, 2018

Agenda:

1. Bell Work
2. Parts of a Flower
3. Tropism Notes

4. Plants are cool too 3



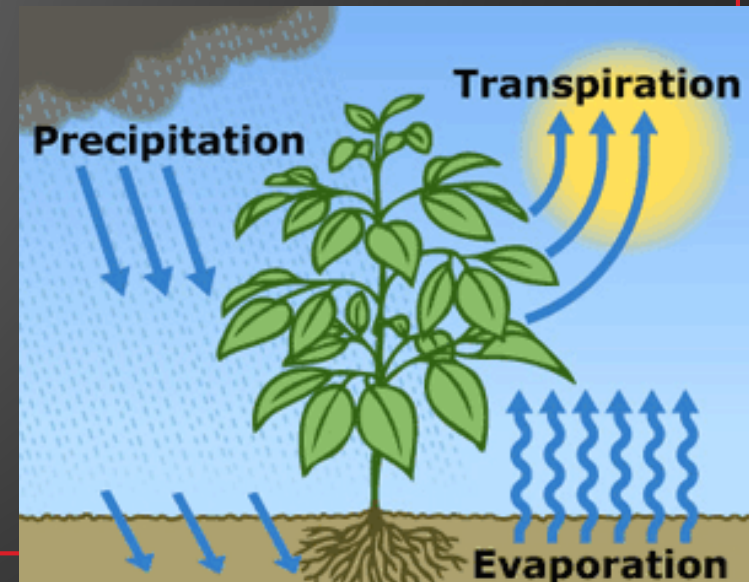
What is the property of water where it sticks to water?

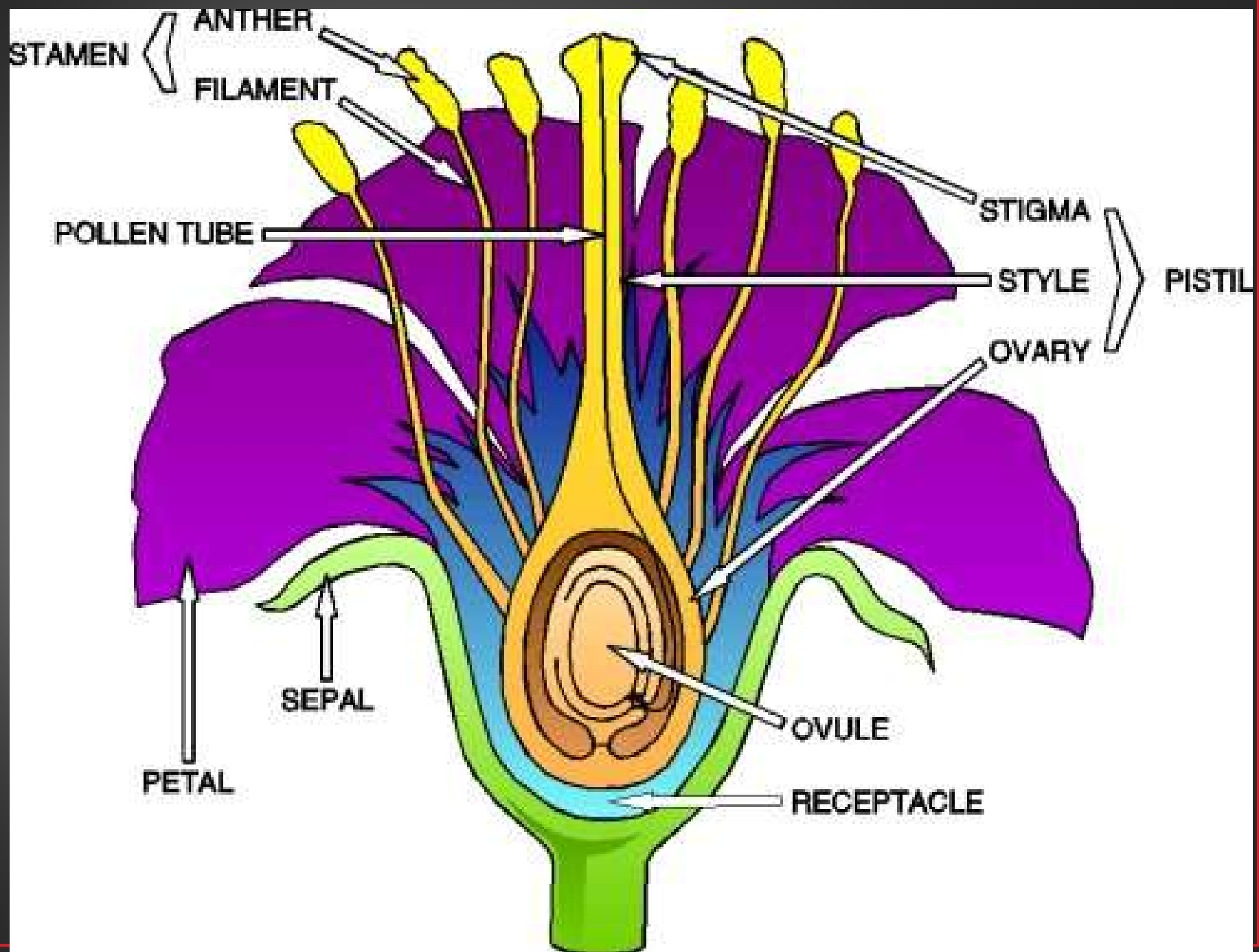
Cohesion



What is it called when water evaporates out of plants?

Transpiration





Turn to page 5
Plant Structure Notes

March 23, 2018

Agenda:

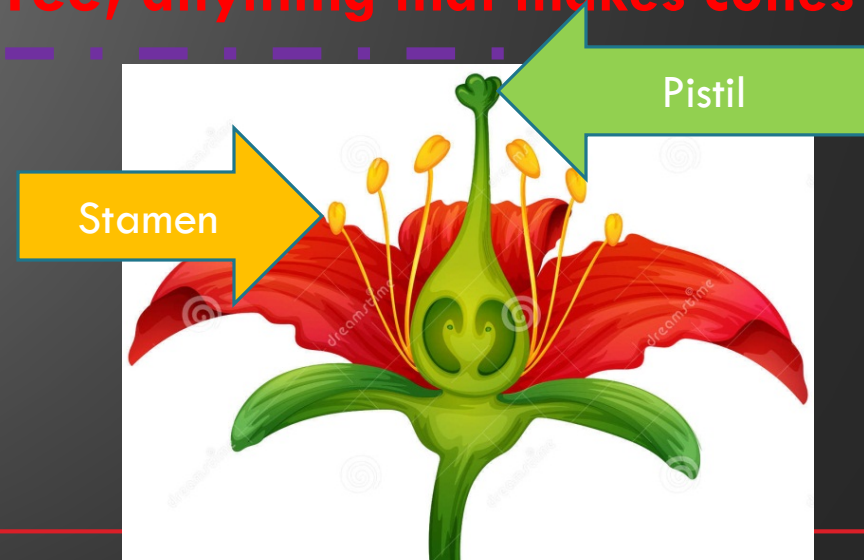
1. Bell Work
2. Finish Simulation
3. Flower Dissection

What are the reproductive parts of a flower?
(male/female)

Stamen **Pistil**

Give an example of a gymnosperm?

Pine Tree, anything that makes cones



March 23, 2018

Agenda:

1. Bell Work
2. Finish Simulation
3. Flower Dissection

Where must the pollen on the flower go, to make a seed?

Pistil → Ovary

What do you think is the most advanced type plant?

Option only. Angiosperm.



March 26, 2018

Agenda:

1. Bell Work.
2. Flower Reading (pg 9)
3. Flower Dissection (10-11)

What type of plant is plant A?

Angiosperm

What type of plant is plant B?

Gymnosperm



March 27, 2018

Agenda:

1. Bell Work.
2. Plant Hormones
3. Test Review

Name an angiosperm.

Dandelion

What is purpose of vascular tissue?

To move water and nutrients

Through plants.



March 28, 2018

Agenda:

1. Bell Work
2. PhotoJournal
(aka Plant book)
3. Quizlet.live
4. Plants are
Cool Too

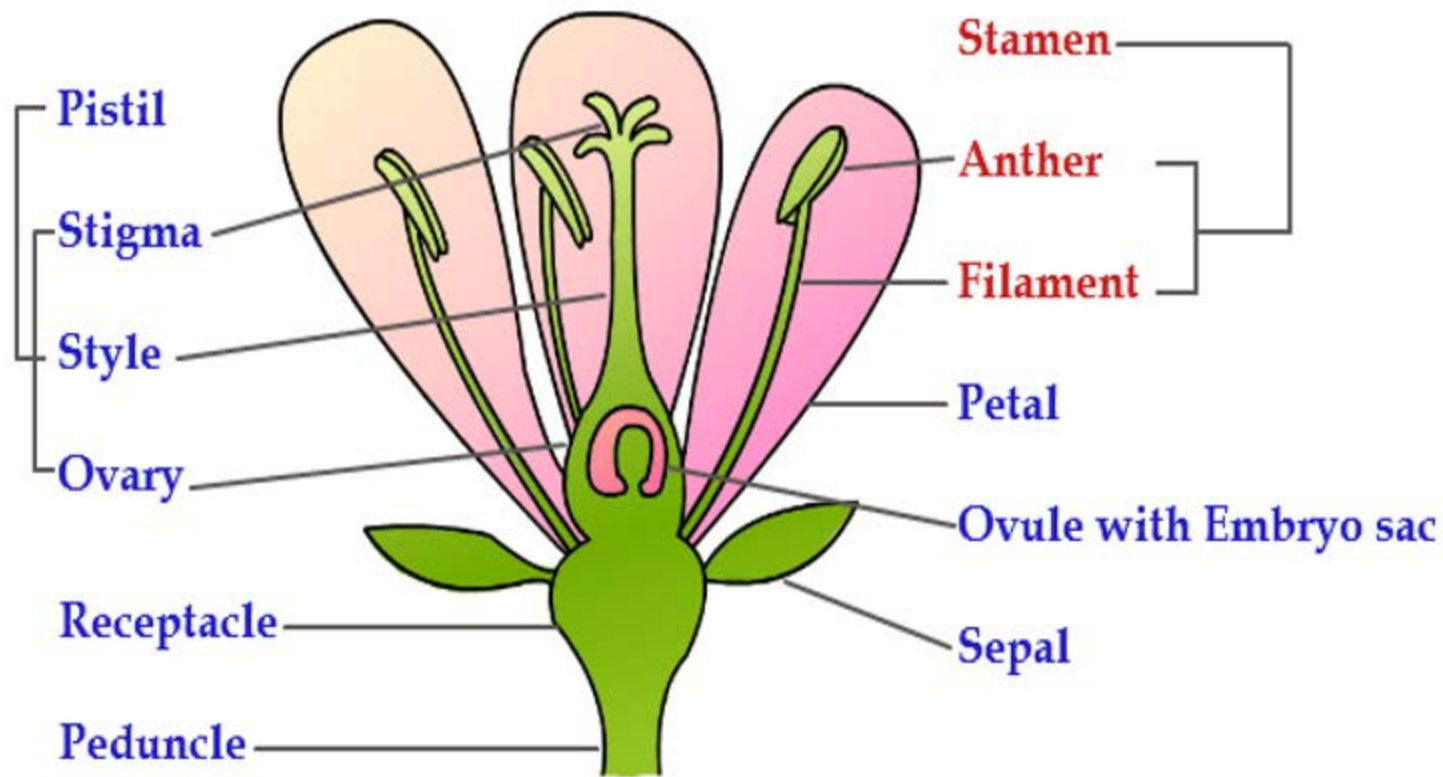
Where is pollen made on a flower?

Anther or Stamen

What role do the petals play in reproduction?

They attract pollinators.





1. Which of the following correctly lists the path of pollen during flower pollination?

- A. Stigma -> Ovary -> Anther -> Style
- B. Anther -> Stigma -> Style -> Ovary
- C. Ovary -> Style -> Stigma -> Anther
- D. Petal -> Anther -> Stigma -> Filament

2. Redvines (*Brunnichia ovata*) are perennial woody vines native to the United States. They develop tendrils that touch and coil around supporting objects. Touched cells produce the hormone auxin and transport it to untouched cells. Some untouched cells will then elongate faster so cell growth bends around the object. Which type of tropism do Redvines exhibit?

- A. Hydrotropism
- B. Gravitropism
- C. Phototropism
- D. Thigmotropism

3. Researchers in Sweden are studying a chemical, Benzylamine, which is a pesticide that kills insects and other pests that damage crops. Researchers were unaware that Benzylamine also poisons the phloem of trees and other plants. How will poisoning phloem affect plants?

- A. Plants will be unable to transport water up from the roots.
- B. Plants will be unable to transport the products of photosynthesis throughout the plant.
- C. Plants will be unable to open and close stomata.
- D. Plants will be unable to bend towards sunlight.

4. BioPak Plus is a dry, water-soluble plant solution that increases absorption of micronutrients. It contains a comprehensive collection of environmentally friendly chemicals to combat plant stress caused by drought and has beneficial bacteria that help plants absorb more and grow faster. Which of the following plant parts does BioPak Plus target?

- A. Stems
- B. Roots
- C. Flowers
- D. Leaves

5. Some plants are able to survive wildfires due to a clever layer of thermal insulation provided by their bark, dead leaves, or moist tissues. Certain trees, including larches and giant sequoias, have incredibly thick, fire resistant bark and can be directly burned without sustaining damage to their vital tissues (though they will eventually die if fires are intense). Which of the following systems are more likely to have the insulation needed to survive a forest fire?

- A. Roots system
- B. Shoots system
- C. Flower system
- D. Stomata system

6. Arrange the following levels of organization from smallest to largest:

A. I, II, III, IV

B. IV, II, III, I

C. II, IV, III, I

D II, IV, I, III

I. Organs/Organ System

II. Cells

III. Organism

IV. Tissue

**Clear Your
Desk!**

Cheating/Plagiarism

1. This includes: copying others' work (inside or outside of class), stealing from internet or others, etc.
2. This will result in **parental contact** and a **0 grade**.

Copying/cheating is not worth zero points!

Once you get your

Test, write your:

FULL NAME, CLASS

PERIOD.

Quiz/Test Expectations

- Desks should be clear with only a writing utensil.
- Absolutely no talking or communicating - **even when you're complete.**
 - Doing so will result in automatic 0 grade.
- Head and body should be faced forward.
- Upon completion, place completed test in front basket.

Once you finish...

**COPYING =
ZERO!**

1. Unit 12 packet

All pages (Excluding 8, 16)

2. Turn in photojournal

3. Sit quietly.

**Place packets
in tray on
teacher desk**